

Cylindrical roller bearings

NU 31/530 EMASZBS1A

Main boundary dimensions (mm)

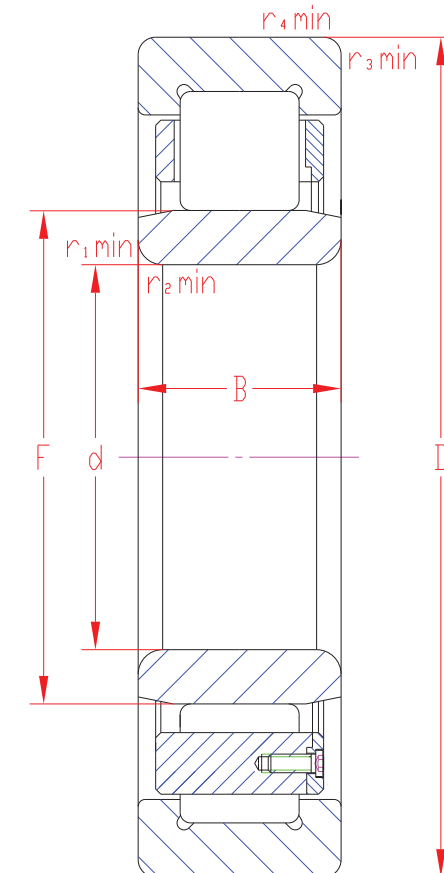
d	530
D	870
B	272
F	611

Technical data

Basic load ratings (kN)	Dyn.	C_r	6870
	Stat.	C_{0r}	12990
Mass (kg)		647,0	
Cage material		Brass	
Radius min (mm)	r₁	7,5	
	r₂	7,5	
	r₃	7,5	
	r₄	7,5	
Precision class		P0	
e		-	
Radial clearance (mm)		CN	
Configuration/Design		NU31/EMAS	

Technical notes

- Through-hardened steel for rings and rollers (RKB SAE485.RAV) with bainite treatment for extended service life
- Machined brass cage guided on outer ring with axial lubrication grooves (suffix MAS)
- Reinforced execution (E-Type)
- Permissible axial displacement 18,9
- 19 ZB rollers with RKB Tough Roller Technology
- Rings dimensionally stabilized S1. 3-M10 lifting holes for every face of both rings
- Q.C.C.D.S. Quality Certificate of Conformity Data Sheet included- Application optimized bearing (suffix A)



Sketch scale is free.

Load ratings are principally based on ISO 281 and ISO 76, but not calculated according to the latest bearing design and execution. For further background ask for related calculations.

Single-sided empowered factors, formulas and tables are not taken into consideration.

Also refer to RKB Affidavit of Conformance (LJSA) for related compliance to International Standards.

Every care has been taken to ensure the accuracy of the information in the present drawing but no liability can be accepted for any errors or omissions contained herein, or in case losses and/or damages (direct, indirect, consequential) should occur.

RKB Bearing Industries reserves the right of any amendment without notice.