

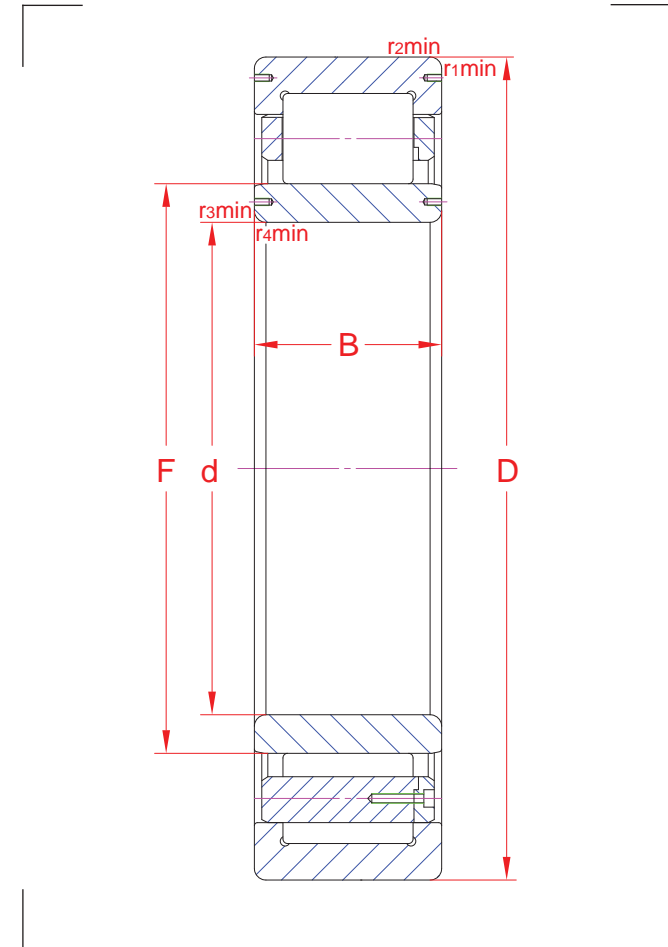
# Cylindrical roller bearings

R01	GR240122	MA240122
-----	----------	----------

**NU 2292 MASC3RZBS1/5**

Main boundary dimensions (mm)	
<b>d</b>	460
<b>D</b>	830
<b>B</b>	212
<b>F</b>	554

Technical data			
<b>Basic load ratings (kN)</b>	Dyn.	<b>C<sub>r</sub></b>	5081
	Stat.	<b>C<sub>0r</sub></b>	8500
<b>Mass (kg)</b>		530,0	
<b>Cage material</b>		Brass	
<b>Radius min (mm)</b>	<b>r<sub>1</sub></b>	7,5	
	<b>r<sub>2</sub></b>	7,5	
	<b>r<sub>3</sub></b>	7,5	
	<b>r<sub>4</sub></b>	7,5	
<b>Precision class</b>		P0	
<b>e</b>		-	
<b>Bearing clearance (mm)</b>		C3R (0,290/0,365)	



Technical notes
<ul style="list-style-type: none"> <li>- Reference speed 700 rpm. Limiting speed 1000 rpm</li> <li>- Permissible axial displacement 16,5 mm</li> <li>- Optimized roller profile for improved load distribution</li> <li>- Machined brass cage guided on outer ring with lubrication grooves in the guiding surface</li> <li>- Bainite hardened rolling elements</li> <li>- Bearing rings heat stabilized for operating temperatures up to 200 °C</li> <li>- For general industry purpose</li> </ul>

The sketch is for reference only and may not be representative or indicative of the actual product. Sketch scale is free.

Also refer to RKB Affidavit of Conformance for related compliance to International Standards.

Every care has been taken to ensure the accuracy of the information in the present drawing, but no liability can be accepted for any errors or omissions contained herein, or in case losses and/or damages (direct, indirect, consequential) should occur.

RKB Bearing Industries reserves the right of any amendment without notice.