

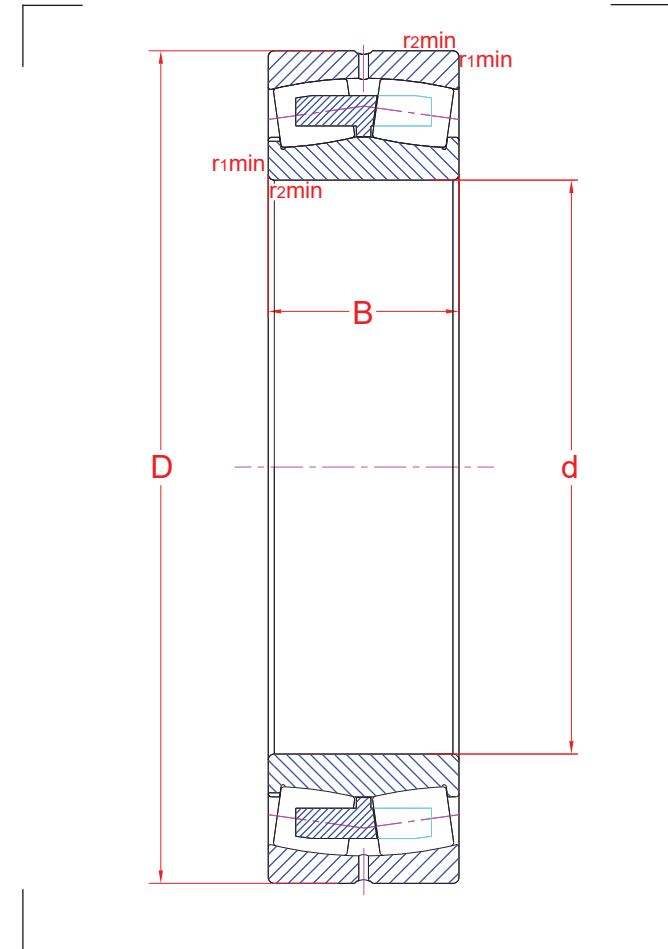
Spherical roller bearings

| | | |
|-----|----------|-------------|
| R01 | MA070518 | VR/MA070518 |
|-----|----------|-------------|

23026 CAW33S1

| Main boundary dimensions (mm) | |
|-------------------------------|-----|
| d | 130 |
| D | 200 |
| B | 52 |

| Technical data | | | |
|-------------------------|-------|------------|-----|
| Basic load ratings (kN) | Dyn. | C_r | 443 |
| | Stat. | C_{0r} | 598 |
| Mass (kg) | | 5,9 | |
| Cage material | | Brass | |
| Radius min (mm) | r_1 | 2,0 | |
| | r_2 | 2,0 | |
| | r_3 | - | |
| | r_4 | - | |
| Precision class | | P0 | |
| e | | 0,24 | |
| Bearing clearance (mm) | | CN | |
| Configuration/Design | | 230/CA/W33 | |



| Technical notes |
|--|
| <ul style="list-style-type: none"> - Reference speed 2700 rpm - Limiting speed 3000 rpm - Double pronged machined brass cage - Annular groove and lubrication holes in outer ring - Bearing rings heat stabilized for operating temperatures up to 200 °C - For general industry purpose |

Sketch scale is free.
 Also refer to RKB Affidavit of Conformance (LJSA) for related compliance to International Standards.
 Every care has been taken to ensure the accuracy of the information in the present drawing but no liability can be accepted for any errors or omissions contained herein, or in case losses and/or damages (direct, indirect, consequential) should occur.
 RKB Bearing Industries reserves the right of any amendment without notice.