

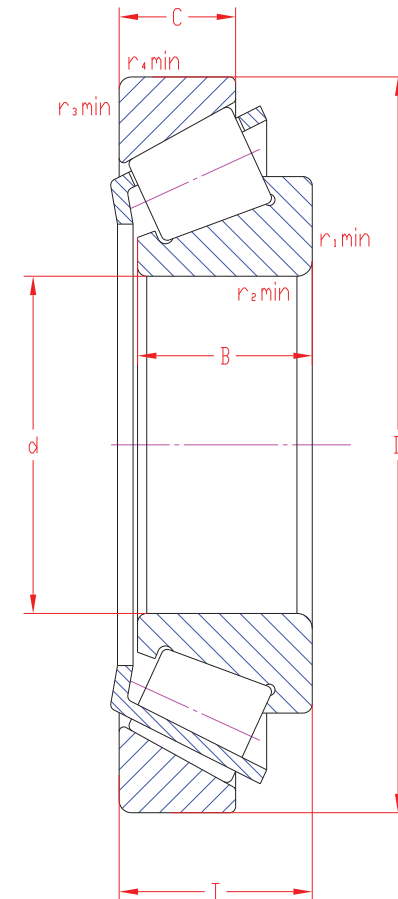
Single row taper roller bearings

OV281114

33208 E

Main boundary dimensions (mm)	
d	40
D	80
T	32
B	32
C	25

Technical data			
Basic load ratings (kN)	Dyn.	C_r	120* (Enhanced)
	Stat.	C_{0r}	125
Mass (kg)		0,8	
Cage material		Pressed steel	
Radius min (mm)	r₁	1,5	
	r₂	1,5	
	r₃	1,5	
	r₄	1,5	
Precision class		P0	
e		0,35	
Radial clearance (mm)		-	
Configuration/Design		332/E	



Technical notes

- Through-hardened steel for rings and rollers (RKB SAE52100)
- Optimized inner geometry (E-Type)
- Speed rating oil lubrication 5500 rpm
- For general industry purpose

Sketch scale is free.

Load ratings are principally based on ISO 281 and ISO 76, but not calculated according to the latest bearing design and execution. For further background ask for related calculations.

Single-sided empowered factors, formulas and tables are not taken into consideration.

Also refer to RKB Affidavit of Conformance (LJSA) for related compliance to International Standards.

Every care has been taken to ensure the accuracy of the information in the present drawing but no liability can be accepted for any errors or omissions contained herein, or in case losses and/or damages (direct, indirect, consequential) should occur.

RKB Bearing Industries reserves the right of any amendment without notice.