

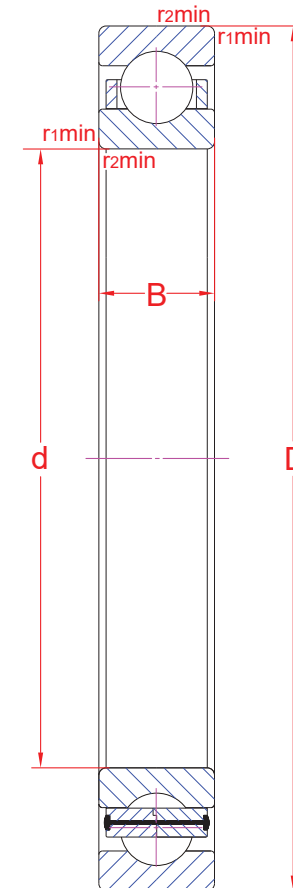
Deep groove ball bearings

R01	LT160218	VR/RD160218
-----	----------	-------------

16040 MB

Main boundary dimensions (mm)	
d	200
D	310
B	34

Technical data			
Basic load ratings (kN)	Dyn.	C_r	169
	Stat.	C_{0r}	202
Mass (kg)		8,8	
Cage material		Brass	
Radius min (mm)	r₁	2,0	
	r₂	2,0	
	r₃	-	
	r₄	-	
Precision class		P0	
e		-	
Bearing clearance (mm)		CN	
Configuration/Design		160/MB	



Technical notes

- Reference speed 4100 rpm
- Limiting speed 2400 rpm
- Machined brass cage guided on inner ring
- For general industry purpose

Sketch scale is free.

Also refer to RKB Affidavit of Conformance (LJSA) for related compliance to International Standards.

Every care has been taken to ensure the accuracy of the information in the present drawing but no liability can be accepted for any errors or omissions contained herein, or in case losses and/or damages (direct, indirect, consequential) should occur. RKB Bearing Industries reserves the right of any amendment without notice.