

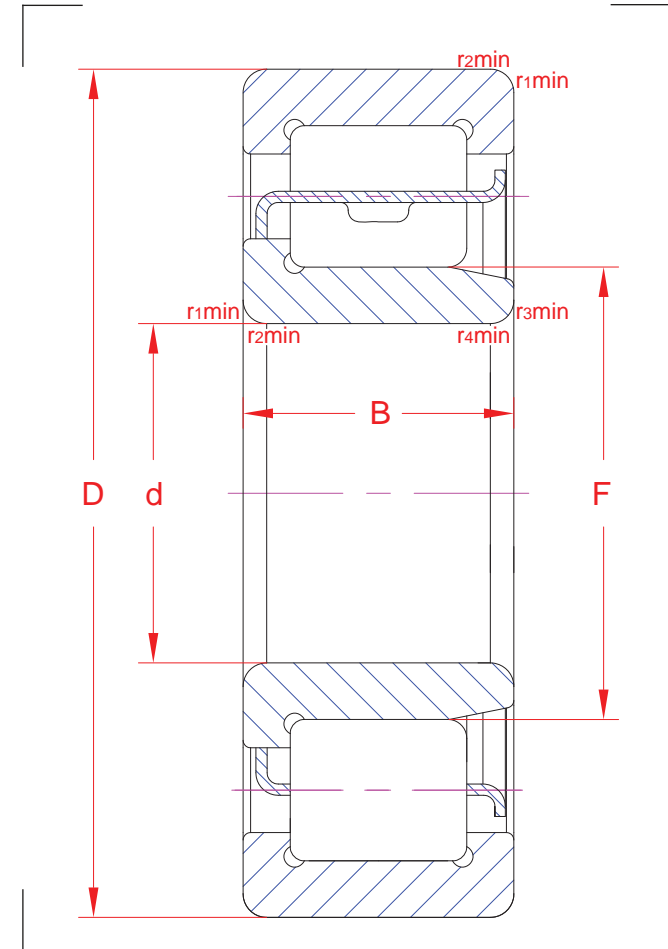
Cylindrical roller bearings

R01	RD070818	GR070818
-----	----------	----------

NJ 209 EJ

Main boundary dimensions (mm)	
d	45
D	85
B	19
F	54,5

Technical data			
Basic load ratings (kN)	Dyn.	C_r	69,1
	Stat.	C_{0r}	62,8
Mass (kg)		0,43	
Cage material		Pressed steel	
Radius min (mm)	r₁	1,1	
	r₂	1,1	
	r₃	1,1	
	r₄	1,1	
Precision class		P0	
e		-	
Bearing clearance (mm)		CN	
Configuration/Design		NJ2/E/J	



Technical notes
<ul style="list-style-type: none"> - Reference speed 8000 rpm - Limiting speed 8200 rpm - Permissible axial displacement 1,2 mm - Optimized internal design with reinforced execution - Optimized roller profile for improved load distribution - Pressed steel cage - For general industry purpose

The sketch is for reference only and may not be representative or indicative of the actual product. Sketch scale is free.

Also refer to RKB Affidavit of Conformance for related compliance to International Standards.

Every care has been taken to ensure the accuracy of the information in the present drawing, but no liability can be accepted for any errors or omissions contained herein, or in case losses and/or damages (direct, indirect, consequential) should occur.

RKB Bearing Industries reserves the right of any amendment without notice.