

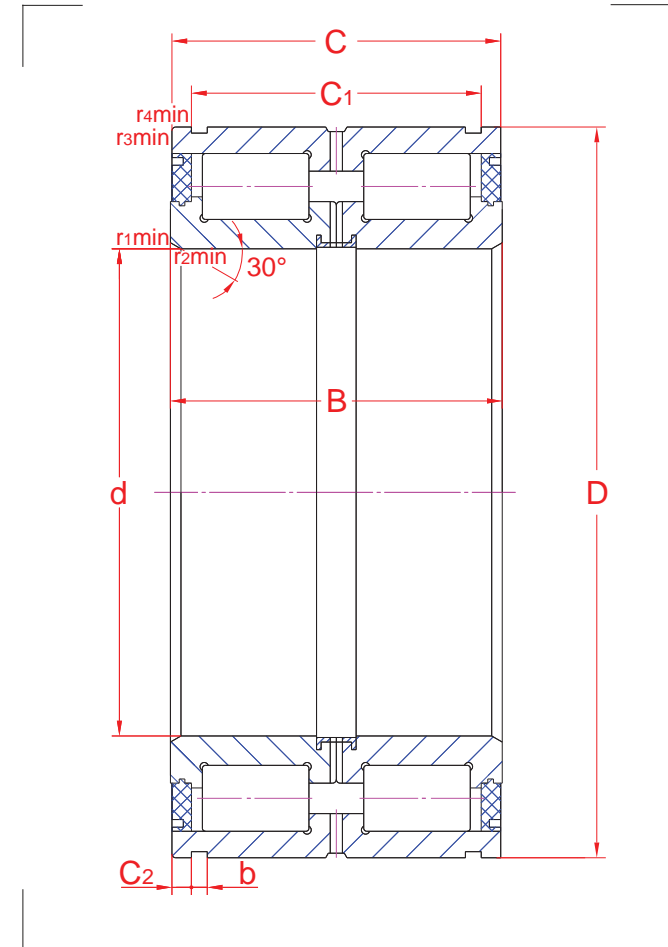
Double row full complement cylindrical roller bearings

R02	GR141119	MA141119
-----	----------	----------

NNF 5012 ADA2LSV

Main boundary dimensions (mm)	
d	60
D	95
B	46
C	45
C₁	40,2

Technical data			
Basic load ratings (kN)	Dyn.	C_r	136
	Stat.	C_{0r}	207
Mass (kg)		1,25	
Cage material		-	
Radius min (mm)	r₁	1,0	
	r₂	-	
	r₃	0,6	
	r₄	0,6	
Precision class		P0	
e		-	
Bearing clearance (mm)		CN	



Technical notes

- Limiting speed 1200 rpm
- Optimized roller profile for improved load distribution
- Wide snap ring grooves (C2=2,4 mm; b=3,2 mm) in outer ring. Two-piece inner ring held together by retaining ring
- Contact seals on both sides
- Filled with standard bearing grease lithium base
- Annular groove and lubrication holes in outer ring and lubrication holes in inner ring
- For general industry purpose

The sketch is for reference only and may not be representative or indicative of the actual product. Sketch scale is free.

Also refer to RKB Affidavit of Conformance for related compliance to International Standards.

Every care has been taken to ensure the accuracy of the information in the present drawing, but no liability can be accepted for any errors or omissions contained herein, or in case losses and/or damages (direct, indirect, consequential) should occur.

RKB Bearing Industries reserves the right of any amendment without notice.