

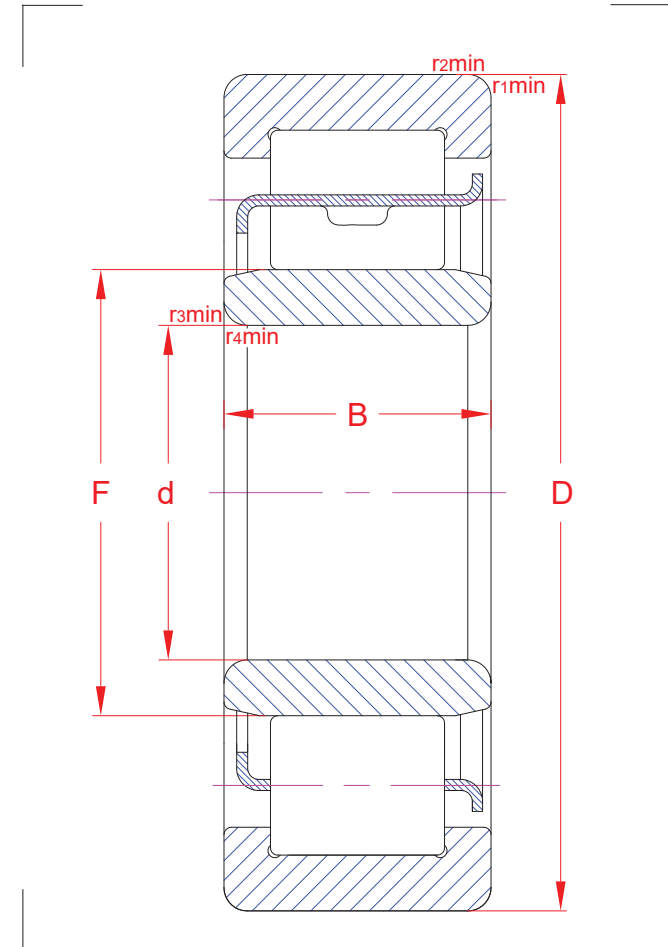
Cylindrical roller bearings

R01	MA181018	GR181018
-----	----------	----------

NU 2210 ECJ

Main boundary dimensions (mm)	
d	50
D	90
B	23
F	59,5

Technical data			
Basic load ratings (kN)	Dyn.	C_r	90,0
	Stat.	C_{0r}	87,7
Mass (kg)		0,56	
Cage material		Pressed steel	
Radius min (mm)	r₁	1,1	
	r₂	1,1	
	r₃	1,1	
	r₄	1,1	
Precision class		P0	
e		-	
Bearing clearance (mm)		CN	



Technical notes
<ul style="list-style-type: none"> - Reference speed 7600 rpm - Limiting speed 7700 rpm - Permissible axial displacement 1,5 mm - Optimized internal design for increased load ratings - Optimized roller profile for improved load distribution - Pressed steel cage - For general industry purpose

The sketch is for reference only and may not be representative or indicative of the actual product. Sketch scale is free.

Also refer to RKB Affidavit of Conformance for related compliance to International Standards.

Every care has been taken to ensure the accuracy of the information in the present drawing, but no liability can be accepted for any errors or omissions contained herein, or in case losses and/or damages (direct, indirect, consequential) should occur.

RKB Bearing Industries reserves the right of any amendment without notice.