

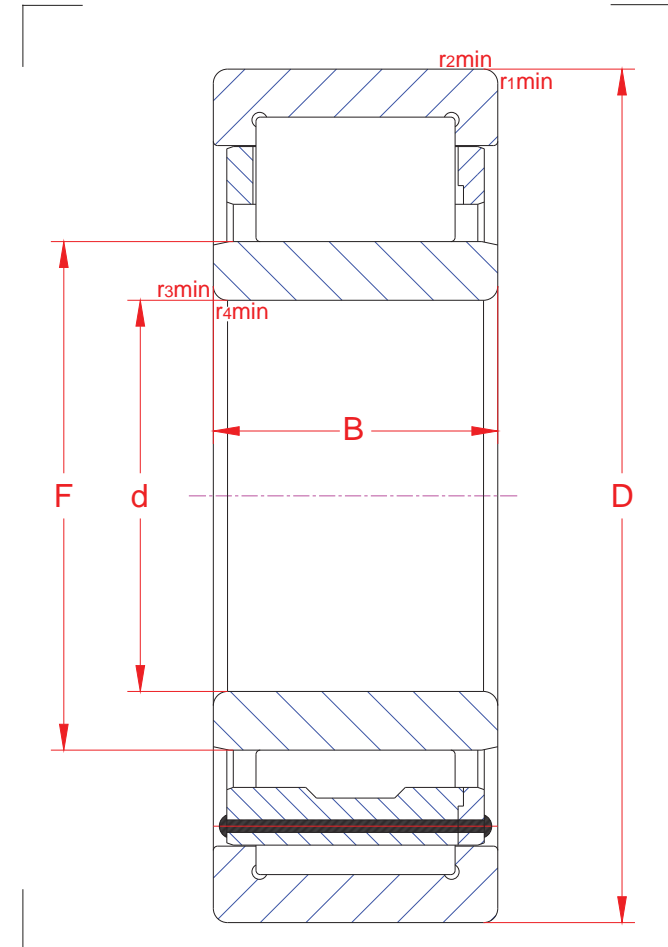
Cylindrical roller bearings

R01	MA191018	GR191018
-----	----------	----------

NU 317 EMAS1

Main boundary dimensions (mm)	
d	85
D	180
B	41
F	108

Technical data			
Basic load ratings (kN)	Dyn.	C_r	339
	Stat.	C_{0r}	329
Mass (kg)		5,20	
Cage material		Brass	
Radius min (mm)	r₁	3,0	
	r₂	3,0	
	r₃	3,0	
	r₄	3,0	
Precision class		P0	
e		-	
Bearing clearance (mm)		CN	



Technical notes
<ul style="list-style-type: none"> - Reference speed 3800 rpm. Limiting speed 4200 rpm - Permissible axial displacement 2,5 mm - Optimized internal design with reinforced execution - Optimized roller profile for improved load distribution - Machined brass cage guided on outer ring - Bearing rings heat stabilized for operating temperatures up to 200 °C - For general industry purpose

The sketch is for reference only and may not be representative or indicative of the actual product. Sketch scale is free.

Also refer to RKB Affidavit of Conformance for related compliance to International Standards.

Every care has been taken to ensure the accuracy of the information in the present drawing, but no liability can be accepted for any errors or omissions contained herein, or in case losses and/or damages (direct, indirect, consequential) should occur.

RKB Bearing Industries reserves the right of any amendment without notice.