

Cylindrical roller bearings

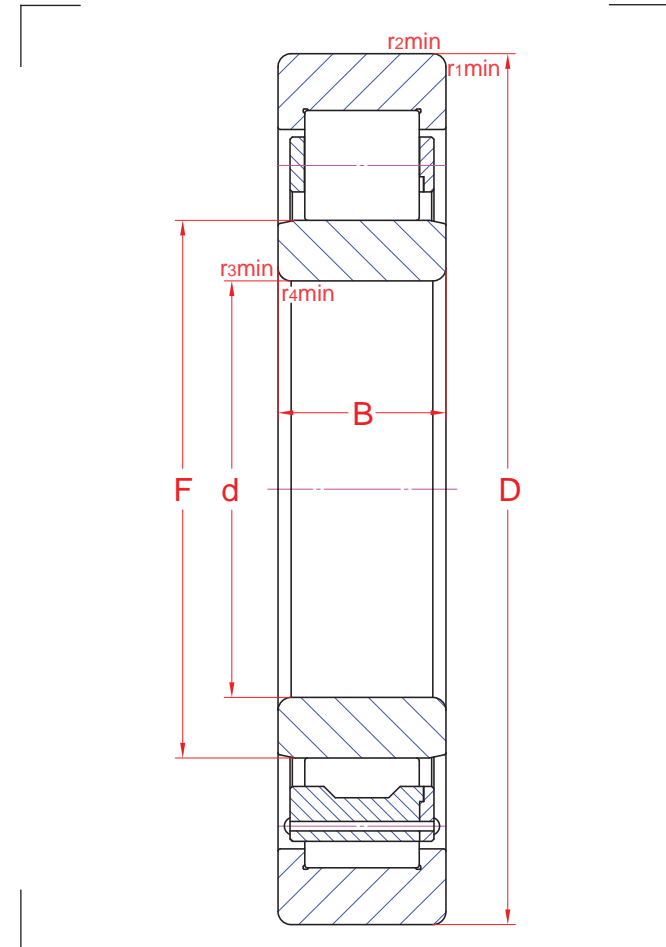
R01	CT220318	MA/VR210318
-----	----------	-------------

NU 322 EMP63A/5A

Main boundary dimensions (mm)	
d	110
D	240
B	50
F	143

Technical data			
Basic load ratings (kN)	Dyn.	C_r	519
	Stat.	C_{0r}	529
Mass (kg)		11,3	
Cage material		Brass	
Radius min (mm)	r₁	3,0	
	r₂	3,0	
	r₃	3,0	
	r₄	3,0	
Precision class		P6	
e		-	
Bearing clearance (mm)		C3	
Configuration/Design		NU3/E/M/A/5/A	

Technical notes
<ul style="list-style-type: none"> - Reference speed 2850 rpm. Limiting speed 2890 rpm - Permissible axial displacement 3 mm - Optimized internal design with reinforced execution - Optimized roller profile for improved load distribution. Crowned raceways - Machined brass cage guided on rollers - Bainite hardened rolling elements - Application optimized bearing



Sketch scale is free.

Also refer to RKB Affidavit of Conformance (LJSA) for related compliance to International Standards.

Every care has been taken to ensure the accuracy of the information in the present drawing but no liability can be accepted for any errors or omissions contained herein, or in case losses and/or damages (direct, indirect, consequential) should occur.

RKB Bearing Industries reserves the right of any amendment without notice.