

Four-row taper roller bearings

R01	GR260822	GR/AB260822
-----	----------	-------------

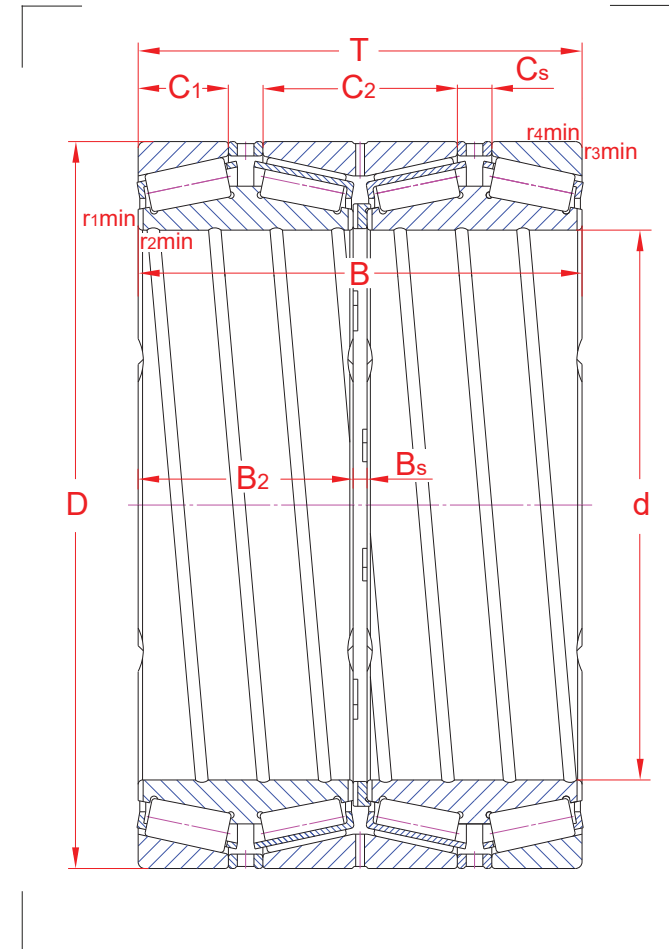
TQO 330641 AAHA4ZBBT4B

Main boundary dimensions (mm)	
d	482,600
D	615,950
T	330,200
B	330,200

Cup dimensions (mm)	
C1	66,675
C2	146,050
Cs	25,400

Cone dimensions (mm)	
B2	158,750
Bs	12,700

Technical data			
Basic load ratings (kN)	Dyn.	C_r	6283
	Stat.	C_{0r}	15204
Mass (kg)		240,0	
Cage material		Pressed steel	
Min chamfer dimensions (mm)	r₁	3,3	
	r₂	3,3	
	r₃	6,4	
	r₄	6,4	
Precision class		CL2	
e		0,33	
K		1,76	
Bearing clearance (mm)		B.E.P. 0,350/0,450	



Technical notes

- Case hardened steel for rings and rollers (SAE 9315.RAV)
- Cage max protrusion 3,000 mm
- Optimized roller profile for improved load distribution
- Helical groove in bearing bore
- Scallop in side faces of double cones and of cone spacer
- Double cup and cup spacers with annular groove and lubrication holes
- Quality Certificate of Conformance Data Sheet included. Marked zones

The sketch is for reference only and may not be representative or indicative of the actual product. Sketch scale is free.

Also refer to RKB Affidavit of Conformance for related compliance to International Standards.

Every care has been taken to ensure the accuracy of the information in the present drawing, but no liability can be accepted for any errors or omissions contained herein, or in case losses and/or damages (direct, indirect, consequential) should occur.

RKB Bearing Industries reserves the right of any amendment without notice.